



NA·UMI

SEASIDE CONDOMINIUMS

AT

PACIFICO

COASTAL LIVING
COSTA RICA

LIFE REIMAGINED



Close your eyes and picture yourself in some far-away, exotic land. Amidst the clear azure sky, the life-giving sun smiles generously downward, radiating warmth and exhilaration. You're blissfully reclined on a beautiful and soft sandy beach with crisp blue waters lazily lapping an arm's length away. Lush greenery is everywhere, a host to exotic and colourful species you never even knew existed. It's the most incredible vacation paradise you could ever imagine; you'll never want to leave.

Welcome to Pacifico in the heart of Costa Rica's Playas del Coco nestled in the hills overlooking Coco Bay, where the perfect resort vacation experience never has to end. A place where everyday life is elevated to luxurious new heights, with a beautiful sandy beach, a full range of active lifestyle amenities at your whim, even a beach club and fine dining all interwoven into this Heaven-on-Earth place you can call home.

A CONDOMINIUM THAT IS TRULY AT ONE WITH NATURE



Gracefully rising from the hills overlooking Coco Bay, a rare collection of five boutique six-storey condominiums is the new pinnacle of Pacifico. Na Umi seaside residences, artfully designed by the award-winning architect, Jean Andre Garnier, is a perfect balance of tranquility, adventure and luxury resort-style living.

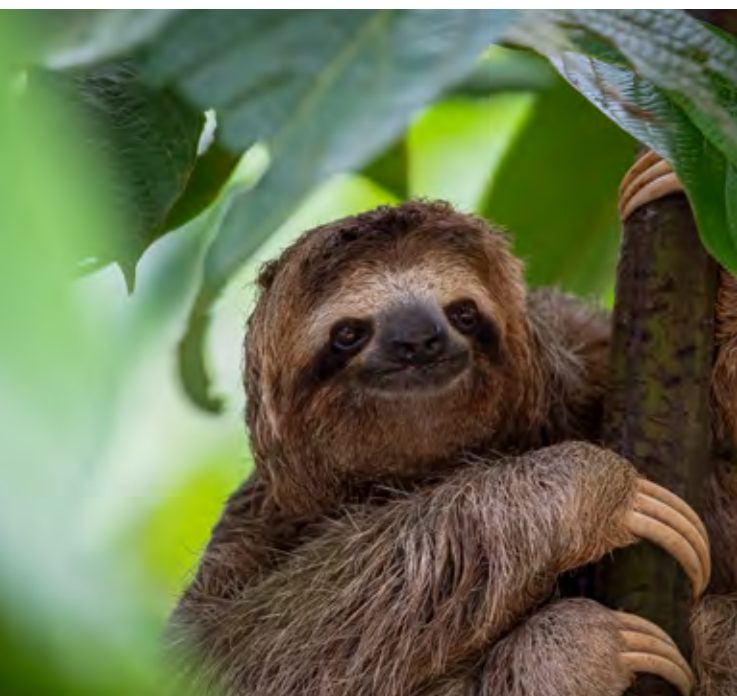
Derived from the Chorotega word Na (to come) and Umi (to observe), Na Umi honours the roots of the Guanacaste region and Chorotega history. The Chorotega culture holds a profound appreciation for a connection to nature and at Na Umi, you can connect with nature, appreciate your surroundings, feel the warmth of the ocean and unleash your best self. Whether a primary dwelling or vacation home, the condominiums at Na Umi offer bright, open-concept layouts, mesmerizing water and mountain views, private balconies with breathtaking natural vistas, and an overall space designed for wellness, vitality and easy-living.



SO MUCH TO DO AND ALL THE TIME IN THE WORLD

Pacifico living takes all your favourite things in life to the next level. Whether you're exploring nature, enjoying one of the many activities on-site or relaxing beachside, Pacifico's phenomenal location in the Papagayo Region enjoys the least amount of rainfall in all of Costa Rica – so you can always do more of what you love.





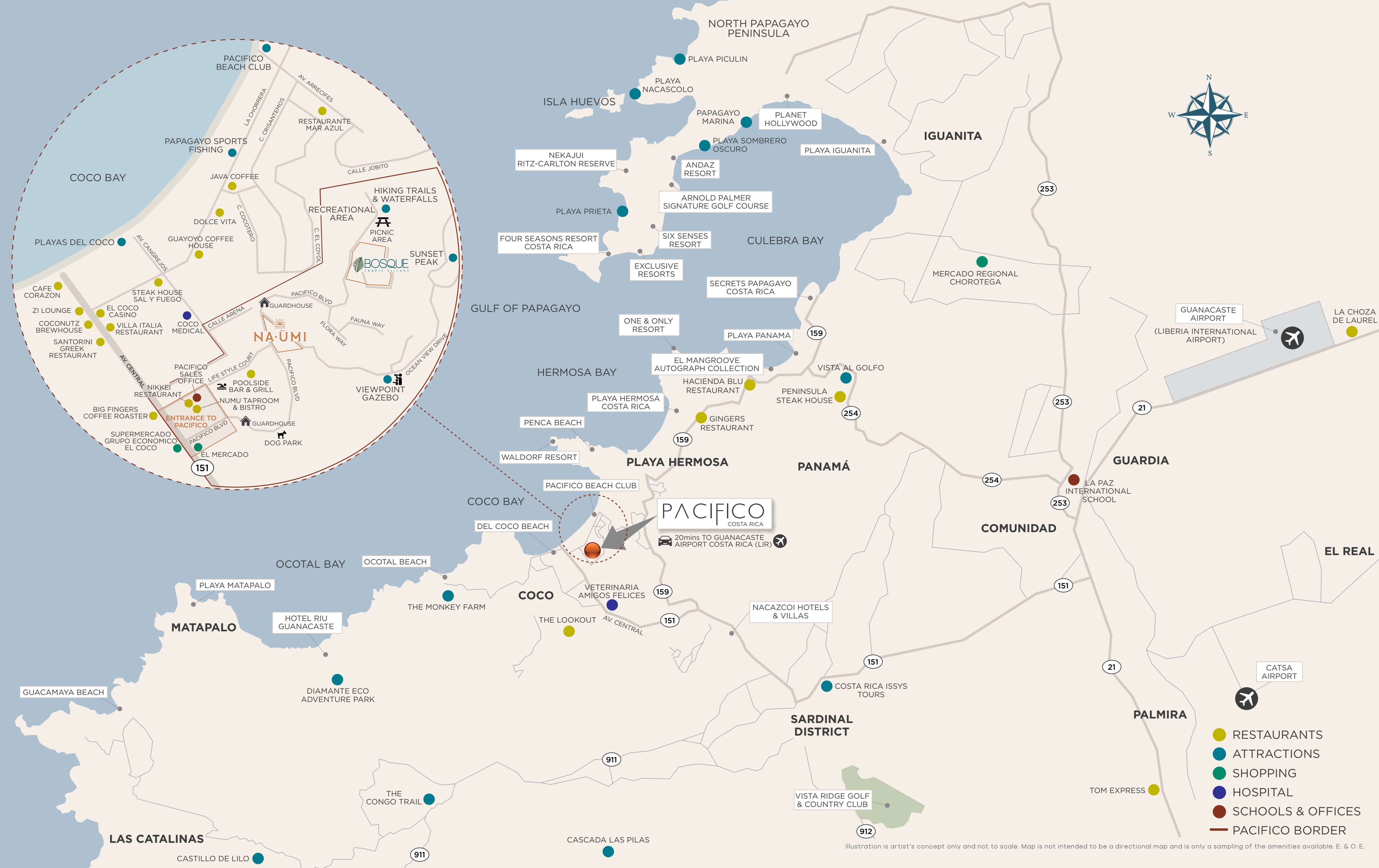
EXPERIENCE LOCAL CULTURE

- Surfing
- National Parks
- Sport Fishing Tours
- Witch's Rock
- Local Wildlife
- Beaches



ONE OF THE MOST ASPIRED RESORT LOCATIONS IN THE WORLD

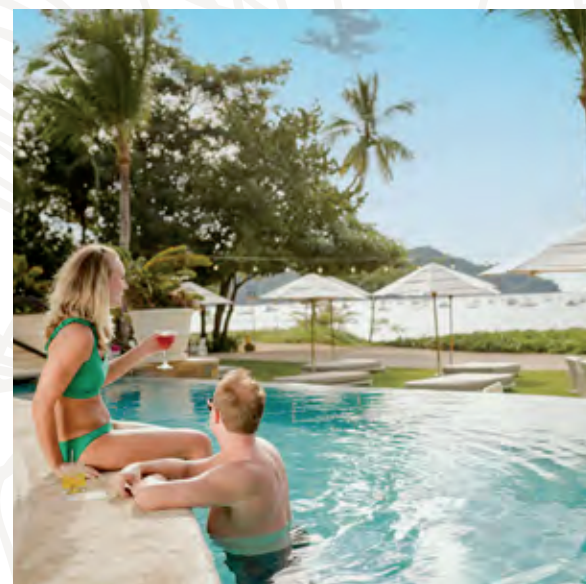
Imagine having Four Seasons, Ritz-Carlton and Waldorf resorts as your neighbours – but with suites at a fraction of the cost. You're also an easy 20 minutes from Liberia International Airport and at the entrance of Pacifico is a retail village where you can purchase all life's luxuries and necessities.





YOUR EXCLUSIVE BEACHSIDE VENUE

The exclusive Pacifico Beach Club is the ultimate game-changer. Virtually float on air in an infinity pool, lounge in the Jacuzzi, order divine fresh bites and custom cocktails, or host an unforgettable event with your friends and family, all with the pristine beach and welcoming Coco Bay waters just footsteps away.



THE NEXT WAVE IN BOATING EXCITEMENT: THE NIMBU BOAT CLUB



The Nimbu Boat Club is Costa Rica's first members-only boat club and is exclusive to Pacifico homeowners. Enjoy all the benefits of owning a boat without any of the hassle or upkeep. Whether it be a world-class fishing adventure, whale watching, or time spent on a secluded beach, our concierge team will work with you to customize your experience. Amenities include a professional captain and crew, food and beverages, and water toys and equipment on the club's top-of-the-line watercrafts. Departing from the Pacifico Beach Club, the Nimbu Boat Club is designed to deliver an experience of a lifetime.





EVERY POSSIBLE AMENITY HAS BEEN THOUGHT OF

At Pacifico, enjoy the many resort-like amenities at your fingertips. Swim on a cloud at any of the gracefully contoured pools that meander through the property. Lounge with good company in one of the pools' many inlets. Climb the Sunset Peak hiking trail and enjoy a picnic near the waterfall. Partake in friendly competition at the multi-sport complex or take some time to stay centered with a yoga break. Engage in some family fun at the children's play area or designated dog park.



EXERCISE ROOM



MULTI-SPORT COMPLEX



BEAUTIFUL CONTOURED POOLS



CHILDREN'S PLAYGROUND



PEACEFUL YOGA SPACES

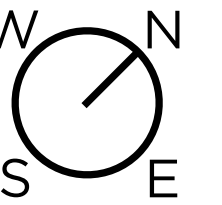


SAVOUR FINE LATIN FLAVOURS

Idyllically located within Pacifico's Beach Club, Alma Santa restaurant presents exquisite Latin cuisine skillfully fashioned from fresh, local ingredients, while the Blu Bar offers pool - or beach-side dining. Pacifico's Piña Shack serves snacks and beverages throughout the many pools within the community. The on-site retail village expands your dining options with additional restaurants offering a variety of creative and flavourful dishes.



PACIFICO



- A MAIN ENTRANCE
- B EL MERCADO GROCER/RETAIL
- C PACIFICO VILLAGE SHOPS
- D SPORT COMPLEX
- E GUARDHOUSE
- F PLAYGROUND
- G VIEW POINT GAZEBO
- H HIKING TRAIL/PICNIC AREA/WATERFALL
- I WASTE TREATMENT FACILITY
- J RECREATIONAL AREA
- K ECOLOGICAL CORRIDOR

- BEACH
- BAR AND GRILL
- POOLS
- WATERFALL
- PICNIC AREA
- DOG PARK

TO COCO BEACH

AV. CENTRAL

NA·UMI

BOSQUE

PROTECTED AREA

COMMUNITY PLAN



Layout and dimensions are approximate and subject to change without notice. Illustration is artist's concept only. E. & O. E.



NA·UMI

SEASIDE CONDOMINIUMS

SITE PLAN

As the first oceanview condominiums to be built within Pacifico, Na Umi is centrally situated within the community grounds, where residents are a carefree stroll from shops, restaurants, pools and more. Its ascending hillside location provides exceptional views of the mountains, bay, boats and beyond.



LIFE'S A JOURNEY



BEAUTY ON THE INSIDE

Modern, open-concept interiors coupled with Chorotega natural influences provides a serene environment where life can breeze easily from one space to the next. Na Umi suites offer inspired ocean and mountain views for the best in indoor/outdoor living.



FINE DINING. AT HOME.

For your convenience, the on-site El Mercado grocery store offers a wide variety of your favourite North American food brands.



WHERE ACTION-PACKED DAYS TURN INTO
EXCEPTIONALLY RESTFUL NIGHTS



RARE AIR

Enjoy an extended moment of tranquility on your gracious balcony while connecting with Pacifico's stunning natural environs.







MARKETING FLOOR PLANS



The Valley

1 BEDROOM

INTERIOR - 599 SQ. FT.
EXTERIOR - 104 SQ. FT.
TOTAL - 703 SQ. FT.

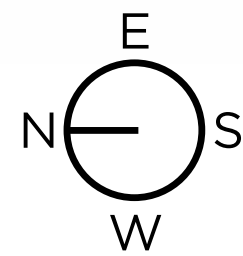
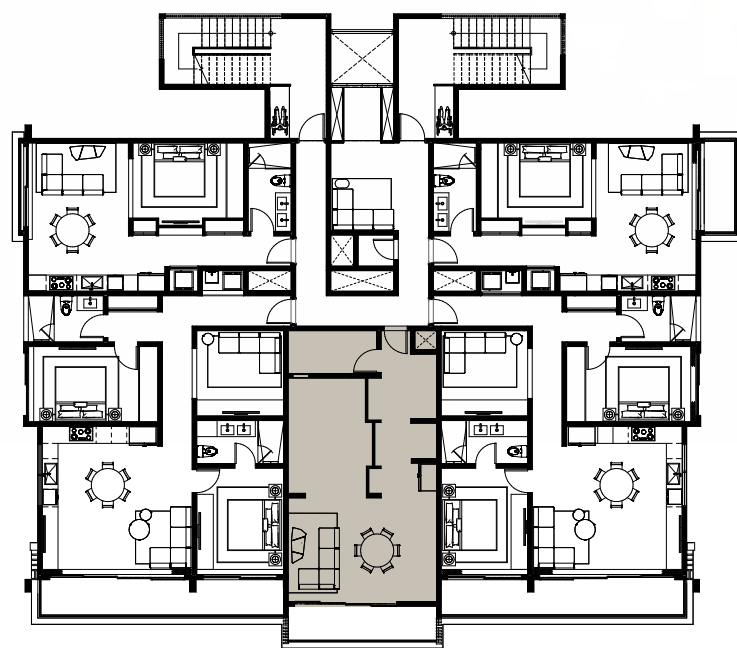


Specifications are subject to change without notice. Actual usable space may vary from stated floor area. All room dimensions shown are approximate. All renderings are artist's concept. E. & O. E.

The Tide

1 BEDROOM

INTERIOR - 634 SQ. FT.
EXTERIOR - 95 SQ. FT.
TOTAL - 729 SQ. FT.

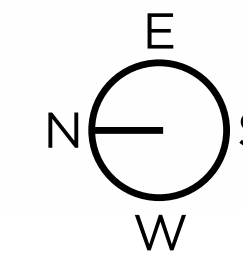
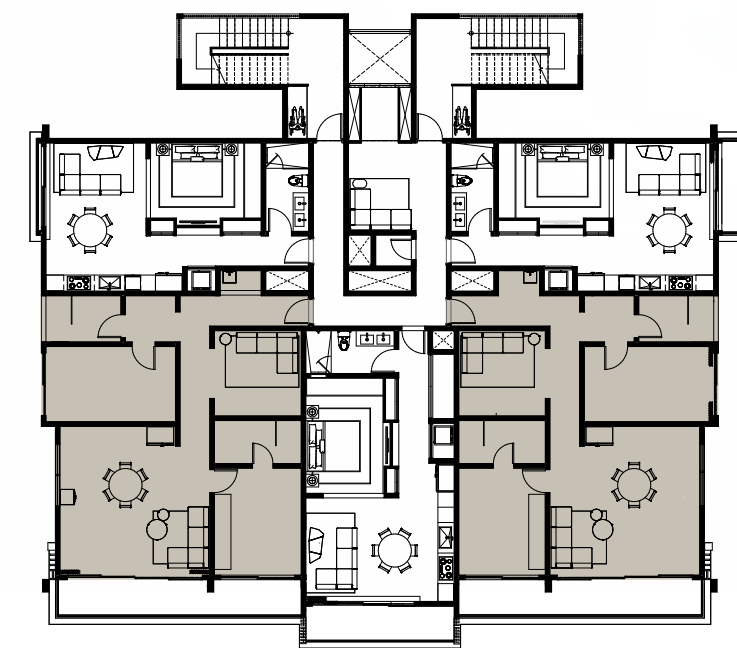


Specifications are subject to change without notice. Actual usable space may vary from stated floor area. All room dimensions shown are approximate. All renderings are artist's concept. E. & O. E.

The Sunset

2 BEDROOM + FLEX

INTERIOR - 1,170 SQ. FT.
EXTERIOR - 153 SQ. FT.
TOTAL - 1,323 SQ. FT.



Specifications are subject to change without notice. Actual usable space may vary from stated floor area. All room dimensions shown are approximate. All renderings are artist's concept. E. & O. E.

FEATURES & FINISHES

PACIFICO AMENITIES

- Gated community with 24/7 security
- Key fob controlled access system at access points
- High-speed internet
- Concierge
- Golf cart rentals
- Visitor parking
- Multiple pools
- Fitness room
- Children's play area
- Designated dog park
- Hiking trails
- Look out and yoga deck
- Grocery store
- Retail village
- Multi-sport complex
- Multiple restaurants

PACIFICO BEACH CLUB

- Concierge
- Adult & kids pool
- Jacuzzi
- Fine dining
- Poolside dining
- Event space
- NIMBU Boat Club

NA UMI BUILDING FEATURES

- Architectural design by renowned architect Jean Andre Garnier
- Balconies, Juliet and terraces with contemporary glass railing systems offering serene ocean views
- Keyless entry
- One custom-designed high-speed elevator per building
- Ground level covered amenities include: entertaining area with BBQ and wash sink, indoor-outdoor co-working space, ping pong table and games area

- Ground Level outdoor amenities include: lap pool, activity and adults pool, lounge seating and sun loungers, cabanas, private garden, dining area, gym, areas for relaxing and meditating, yoga deck and access to walking trails
- Underground parking with security monitoring from security and data centre 24/7
- Bicycle parking for residents and visitors
- Underground parking with EV chargers/rough-in for EV chargers and well lit for added safety and security
- Comfortable lobby at each level for guest seating

GENERAL SUITE FEATURES

- Approx. 9' ceilings throughout
- Large format porcelain flooring throughout foyer, living and dining areas, bedrooms, kitchen and balcony, as per vendor's standard samples
- Custom designed solid core entry doors to suites, complete with view hole for added security
- Custom built-ins for added convenience and storage
- Black frame and trim sliding doors and windows throughout
- Balconies, Juliet balconies, terraces and patios with large sliding doors that open to expand living space and connect interior and exterior spaces as per plan

KITCHEN

- Custom contemporary kitchen cabinetry design as per vendor's standard samples
- Quartz slab countertops as per vendor's standard samples
- Contemporary tile backsplash as per vendor's standard samples
- Single basin stainless steel undermount sink with single-lever pull out faucet in brushed nickel finish

APPLIANCES

- Kitchen appliances consisting of 36" fridge, 24" slide in range, 24" dishwasher, and built-in 24" microwave
- Top of the line stacked laundry and dryer – Samsung, GE, Frigidaire (or equivalent)

BATHROOMS

- Custom contemporary bath cabinetry design as per vendor's standard samples
- Quartz countertops with undermount sink
- Contemporary single lever faucets in brushed nickel finish
- Full height porcelain wall tile in shower stall as per vendor's standard samples
- Faucet in brushed nickel finish and showerhead in separate shower stall
- Framed clear glass shower door and recessed ceiling moisture resistant shower light in separate shower stall
- Porcelain floor tile in bathrooms as per vendor's standard samples

MECHANICAL FEATURES

- Individually controlled central air conditioning and heating system
- Pot lighting throughout as well as undermount kitchen lighting
- Individual electricity and water meters
- Smoke detector and water sprinkler system
- Back-up generator for power outages
- 100% low consumption LED lighting

All photographs and illustrations do not necessarily depict actual features but represents similar quality that will be offered. Features and finishes may vary by suite designs. See Sales Associates for details. Materials and specifications are subject to change without notice. Ceiling heights are subject to bulkheads, dropped ceilings and structural beams. Illustrations and renderings are artist's concept. E. & O. E.

An aerial photograph of a beach. The left side shows the turquoise ocean with white foam from a wave washing onto the shore. The right side is a wide, sandy beach. Two people are walking on the sand, their shadows cast to the right. The text 'LIFE IS WHAT YOU MAKE IT' is overlaid in white, serif, all-caps font across the center of the image.

LIFE IS WHAT
YOU MAKE IT

THE TEAM

DEVELOPER

PACIFICO

Pacifico is owned and operated by a Canadian entrepreneur and a local Costa Rican businessman who has been involved in Pacifico since its earliest days. Together, the duo brings a strong understanding of North American modernities and technologies, fused with the colourful Costa Rican culture, connections and a passionate sense of community. The developers provide many of the construction and project management services in-house, ensuring this groundbreaking development meets their vision for uplifting lifestyle amenities and a warm, inviting community that welcomes homeowners and visitors alike.

ARCHITECT



Spearheaded by the firm's internationally renowned and award-winning Architect Director, Jean Andre Garnier, Garnier Arquitectos takes care to incorporate biophilic elements to the conceptualization of their designs by generating a link between nature's elements and interior spaces. The firm also incorporates sustainable architecture in every detail to achieve an efficient use of resources, comfort and to improve the quality of life of residents while mitigating environmental impacts.



SALES & MARKETING

HIRSCH + ASSOCIATES

Hirsch + Associates is a full service real estate firm delivering exceptional experience for over 15 years. The Hirsch team guides the city's most prominent developers in all steps of the process, bringing projects to life with comprehensive industry expertise and a passion for innovation. From new master-planned communities to high-rise condominiums and everything in between, every unique sales program is handled with individualized creative ideation followed by flawless execution. With over 7,800+ units sold, \$4.4+ billion in sales, and 34+ successful projects tactically led from inception to completion, their greatest pride is achieving success for clients and buyers alike.

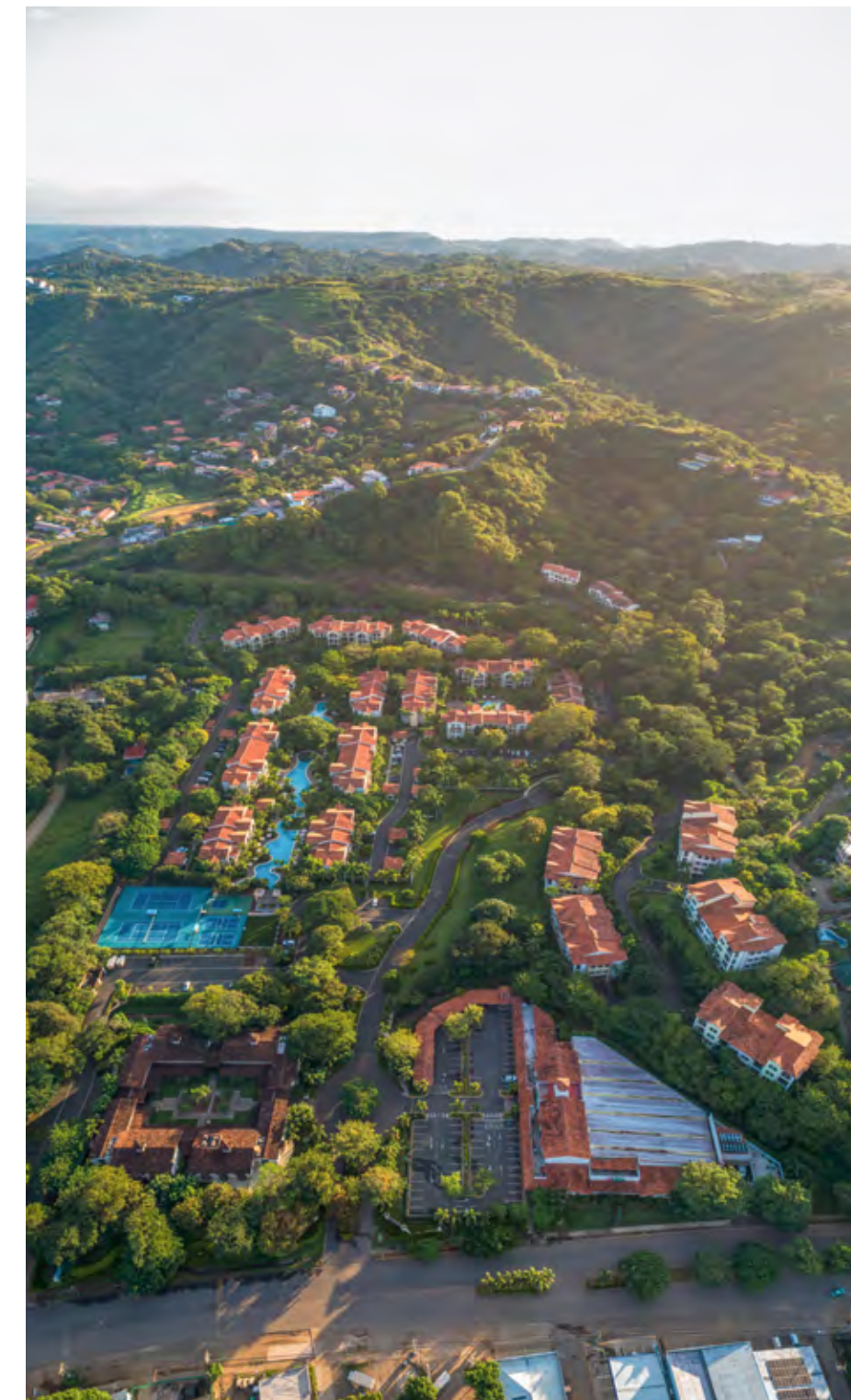
klg | REAL ESTATE & CONSULTING

KLG Real Estate & Consulting collaborates with premier builders to bring pre-construction buildings and master-planned communities to life. As a strategic partner, the firm provides expert guidance and insight from initial concept to occupancy and everything in between. With eight years' experience, KLG has successfully positioned and sold many towers, resorts and master-planned communities.

INTERIOR DESIGN

NAAS CULTURE INTERIOR

The NAAS philosophy is based on innovation. The firm aims to introduce the latest design trends to their clients and create amazing alternatives for them to enjoy their lifestyle. NAAS uses a "lab" approach to create and individualize spaces drawing from an extensive array of home fashions, materials and finishes.





Artist's concept.



NA·UMI

SEASIDE CONDOMINIUMS

— AT —

PACIFICO

COASTAL LIVING
COSTA RICA

PACIFICO-COSTARICA.COM

1-800-943-1190

NaUmi@pacifico-costarica.com